

Internal Ocular Health Exam

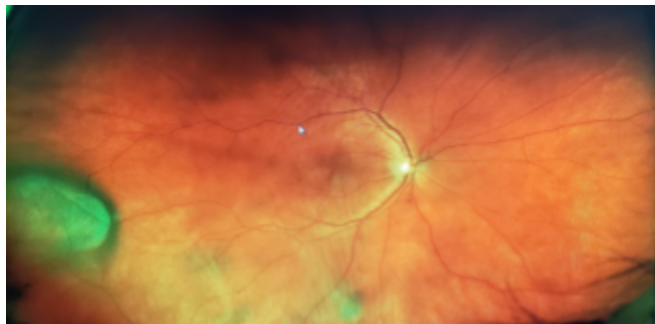
As part of a comprehensive eye examination, it is recommended that **ALL** patients have the internal health of their eyes thoroughly evaluated every year. Our doctors recommend this be done by Optomap retinal image.

Optomap imaging is a detailed, widefield picture of the entire retina. It does not require any eye drops that blur vision and becomes a permanent part of your medical record.

Dr. Poole is concerned about uncovering and documenting problems such as macular degeneration, glaucoma, retinal holes or detachments and diabetic retinopathy (all of which can lead to partial loss of vision or blindness). Systemic diseases such as **diabetes** and **high blood pressure** can also be discovered during a retinal exam. ***Just as your dentist regularly takes pictures of your teeth, or mammograms are used for early detection, your eyes deserve the same quality care.*** These health conditions are difficult to detect without the **Optomap** Retinal exam or **dilation** of the pupils with eye drops due to the limited view of the internal structures of the eye.

PLEASE NOTE: There is a charge of \$29 for the Optomap

- I have read the above and **agree** to the **Optomap** retinal exam.
- I have read the above and **decline** the Optomap exam but would like to have my eyes **dilated**



*Malignant Melanoma detected by Optomap
image at Poole Eye Assoc in 2017*

Patient/Parent _____ Date _____